

Quirindi Rural Heritage Village (Inc)



R.O. Box 338 Quirindi

June 2023

Village site cnr Kamilaroi Hwy and Borambil Rd

*Meetings are held on a monthly basis.... 2nd
Tuesday of the month 7.30pm at the coffee shop*

Village Happenings

Building progress

Since the last newsletter, new toilets and showers have been purchased and installed. This involved a new septic system to comply with Council's requirements. Although this has been an expensive investment for the Village, a state government grant (Community Partnerships) considerably softened the cost.



The new shower /toilets

Miniature Railway

Quirindi Village Miniature Railway continues to provide train rides for all ages on the 4th Sunday of each month. The railway attracts visitors from a large area of the Upper Hunter and North West. It is also available for hire for Birthday parties and provides outings for disabilities groups. For more information on the Village railway, contact John Maunder.



Thursday Men's Shed

This group meets in the workshops at the Village each Thursday morning. Some are serious woodworkers, some learners. Not all who come on Thursdays are into woodwork. Some simply enjoy talking to other men and eating delicious dampers for morning tea. For more information the contact is Bruce Henry



Men's shed morning tea

The Village Car Club

This group usually meet at the Village on train running days for coffee and a chat about cars. For more information contact Garry Nichols



The car club

The Coffee Shop

The shop continues to open each Friday, Saturday and Sunday (currently not the first weekend of each month). It is staffed by a small group of volunteer ladies. New ladies are always welcome to join the roster. If you could spare a day a month to keep the Village open, please call Sue Nichols



Some of the coffee shop ladies

The Village Museum

Keeping the Museum clean and changing the displays takes a lot of time. Mary Roberts has been the curator for several years but she does need helpers to keep the museum up to the standard you'd expect. Cataloguing is a major part of any museum. This onerous job falls on to Ken Aitken.



Kitchen 1940's era

Blacksmiths

Now that the weather is cooling, the blacksmiths are again meeting on the 3rd Sunday of each month to hammer hot metal. Scott Taylor is the contact, if this is your interest.



The Blacksmiths at work

Ground Maintenance

13 acres requires a lot of mowing. The Village is fortunate to have Ian Hughes who has been faithfully turning up to mow the area ever since the Village opened. The lawns and gardens closer to the museum are expertly looked after by John on the mower and Arthur and Jack who are brush cutter authorities

Model Railway group

This younger group meet at irregular times to construct and operate a model railway in HO gauge. Their building is located at the rear of the Museum and is usually operating on the Miniature Railway running days. Contact for this group is Matthew Wilcox.

Cedric's group of helpers

The Village has over many years been fortunate to have the assistance of people completing community service. Many of these people have enjoyed their time here and have continued to come to the Village long after their required hours have been served. The Village would be hard pressed to continue if this source of help was not available.

Header restoration

Following the restoration of a grain harvester for Blacktown Council a few years back, Geoff Ingall assisted by Ian Saunders and John Benham have continued to restore several headers, using the pavilion near the main gate as their workshop. The Village will soon have a collection of restored farm machinery the envy of many museums thanks to these dedicated gents.



Recent restored header

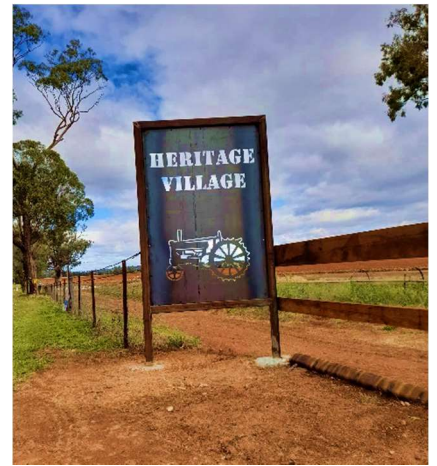
The Chapel

The church that was restored some years ago from Blackville is available for Weddings, naming ceremonies etc
For more information contact Cedric Grayson



Village entrance signs

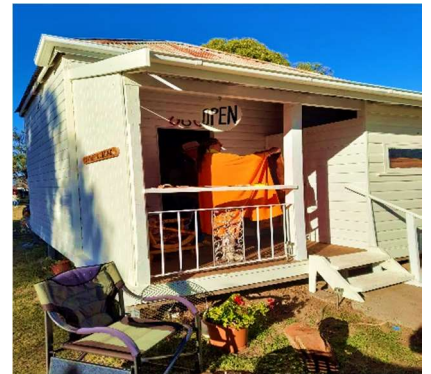
The Village Chairman, Bob McInnes was inspired by museum entrances he had witnessed at other museums on his travels and decided ours needed upgrading. After deciding what they would look like, the signs were purchased and expertly installed by the Tuesday and Thursday village volunteers in time for our recent rally.



Part of the new Village entrance

Leather and Lace

The old "maids quarters" has been restored and is now open on most Train Running days
More info from Rikke Tobin



Leather and lace

Train World

Train World has been constructed by village members following a donation of trains, track and trackside fixtures by Norm Mitchell. The building was constructed using a Commonwealth Government grant and Village funding. Train world continues to improve and is open on miniature railway running days being the 4th Sunday of each month.



Catching up on Membership

Membership of the QRHV is from July 1 until June 30 in any financial year. You must be a financial member of QRHV to be part of any of the groups within the Village such as the Miniature trains, Car Club, Blacksmithing, Men Shed or Coffee Shop. Membership of the NHMA from where we gain our insurance cover lasts until July 31st in any financial year. This overlap allows clubs to collect monies and determine numbers to be submitted for the coming year. Membership cannot be backdated.

Our fees (Including GST) are as follows, Single \$25, Pensioner \$20 Junior \$12.

A few shots from the 2023 Rally



Snipits from the 2023 Rally